

Product Brochure

January 2018

Anritsu

X-ray Inspection System

Discover What You've Been Missing...

DETECTION PERFECTION



XR75
A.L.L.
ADVANCED LONG LIFE TECHNOLOGY



DESCUBRE MÁS EN

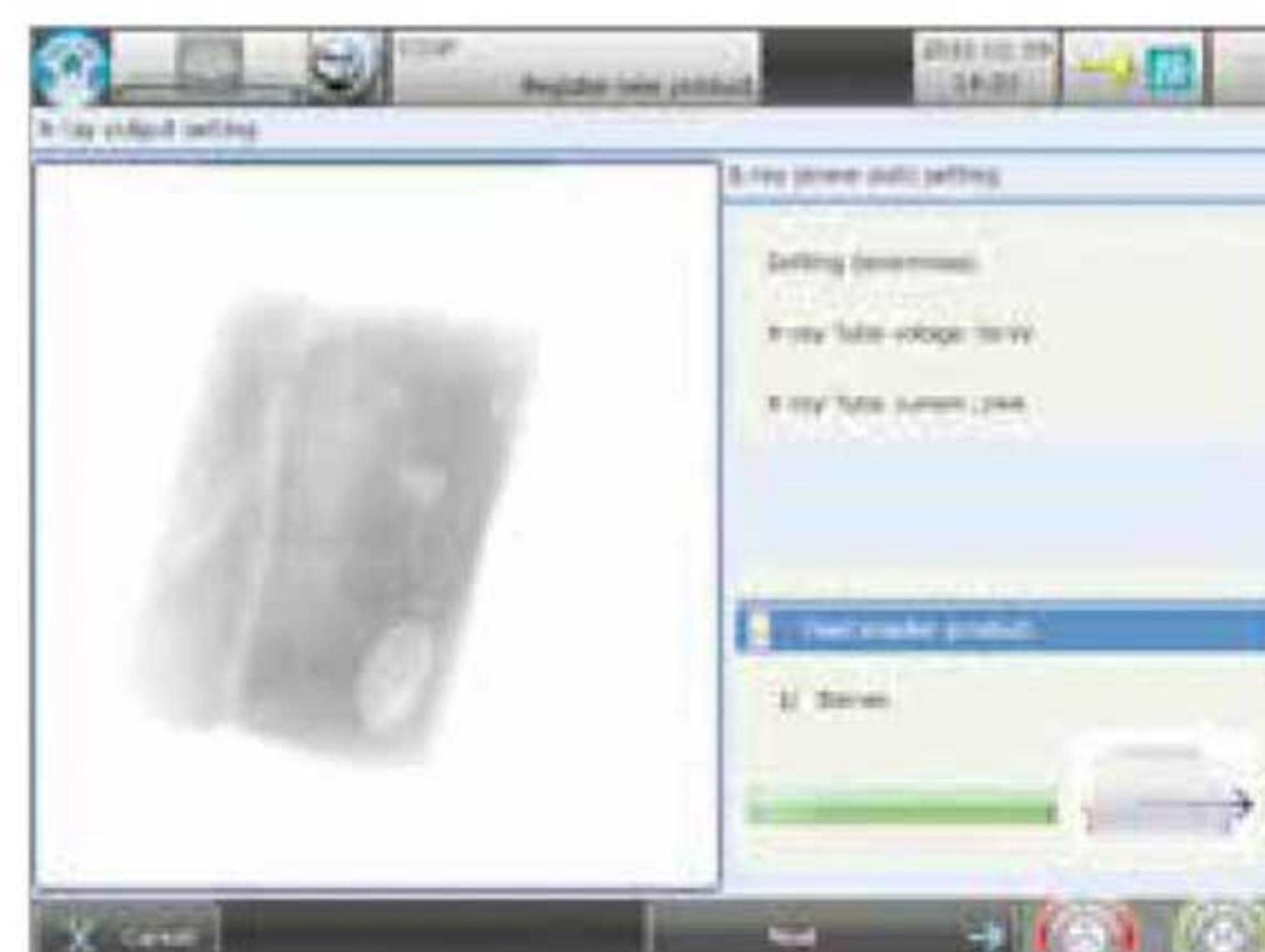
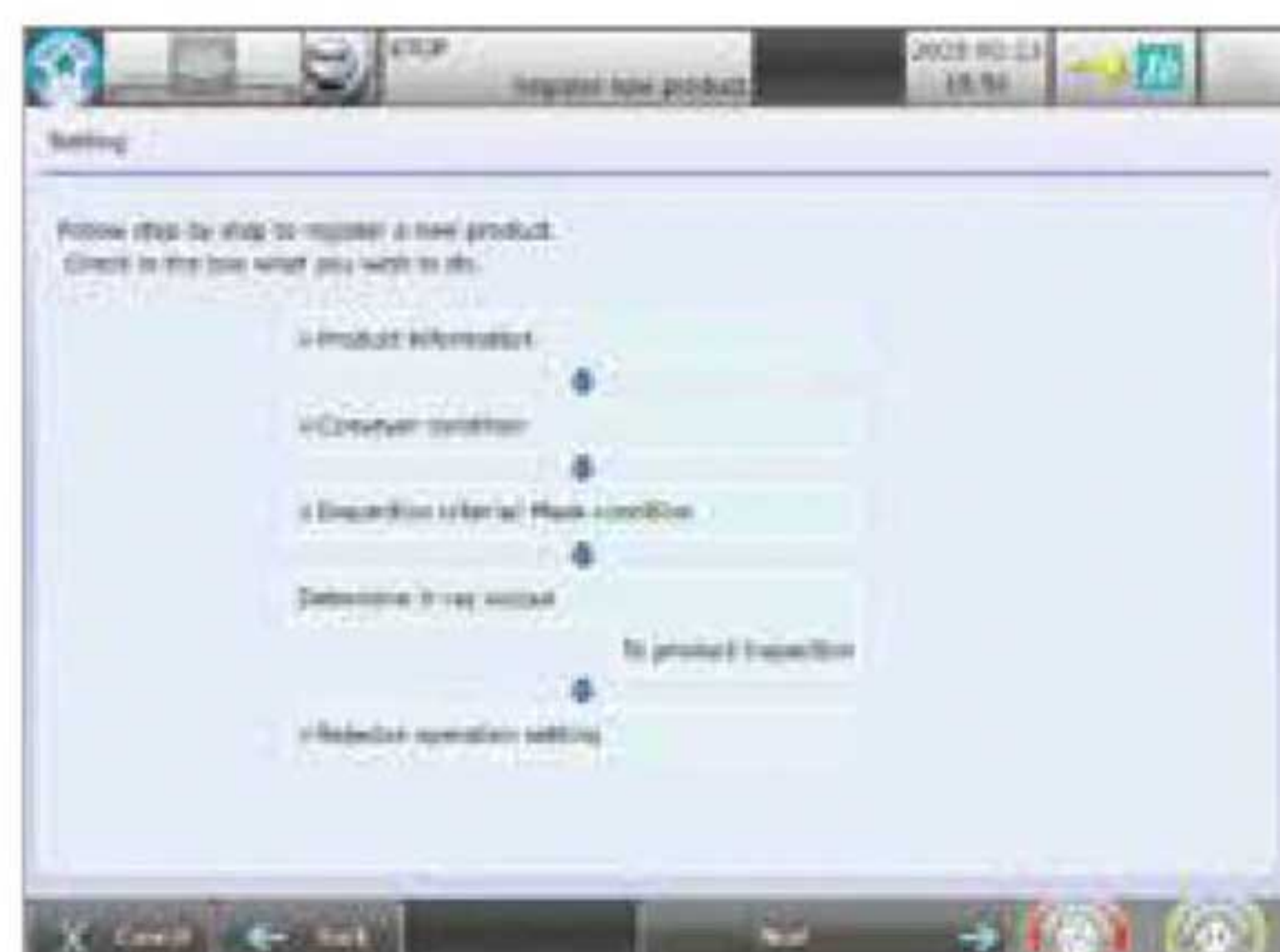
www.taglermaq.cl

Easy to operate



✓ Simple step-by-step product setup

Product Registration Navigation simplifies parameter setting procedures with step-by-step illustrated instructions.



✓ Simple maintenance

[Easy parts removal] No tools are required for removing/attaching the conveyor belts and rollers including the front cover and x-ray leakage prevention curtains.

[Easy-to-clean design] The system's angled surfaces prevent water from accumulating after system cleaning.



Tool free belt removal



Sloped surfaces for water run-off.

✓ Simple information management

X-ray images and inspection logs can be saved to the USB memory for HACCP compliance. All Anritsu systems can be connected, via Ethernet, to QuiCCA. QuiCCA provides line status information, centralized reporting and data storage.



USB interface (USB memory is optional)

Overall quality management and control system - QUICCA



DESCUBRE MÁS EN

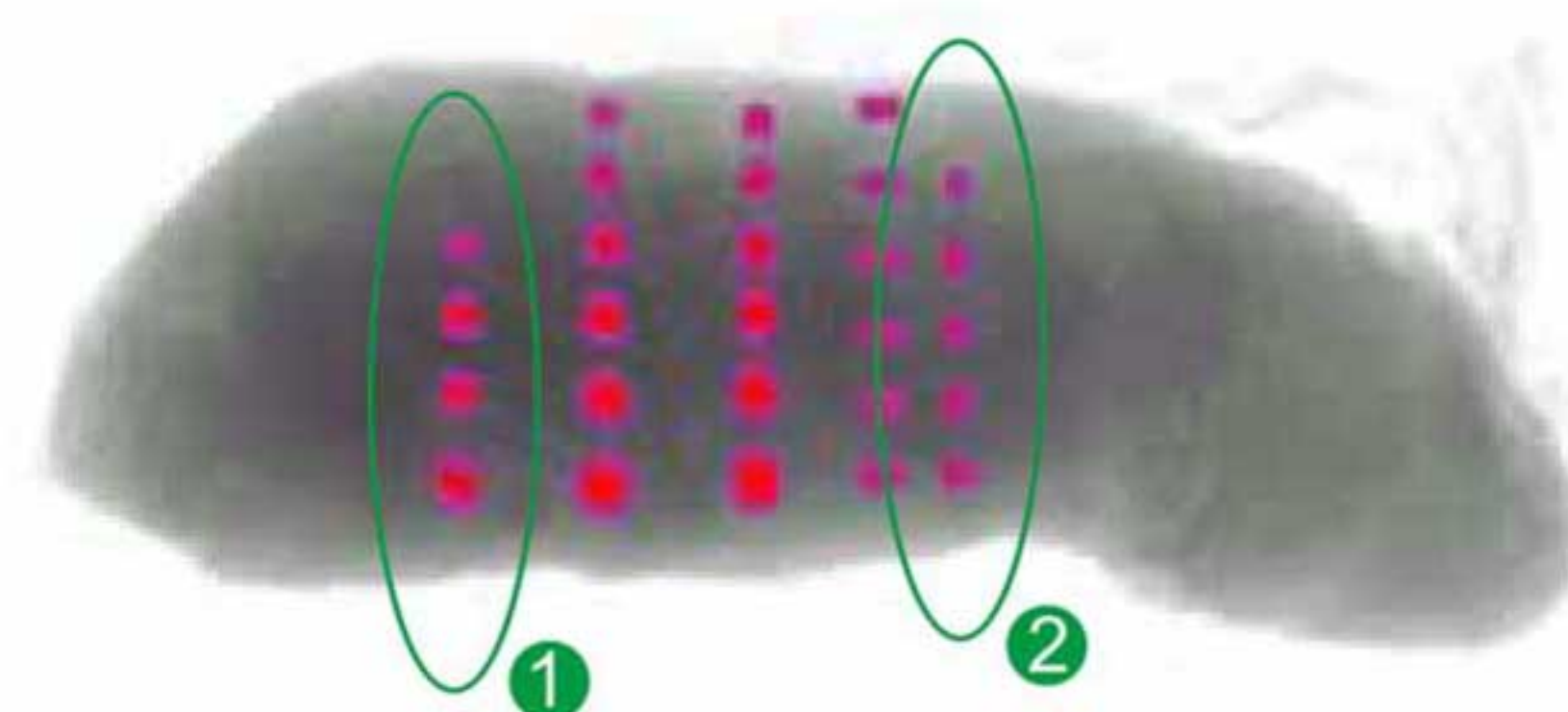
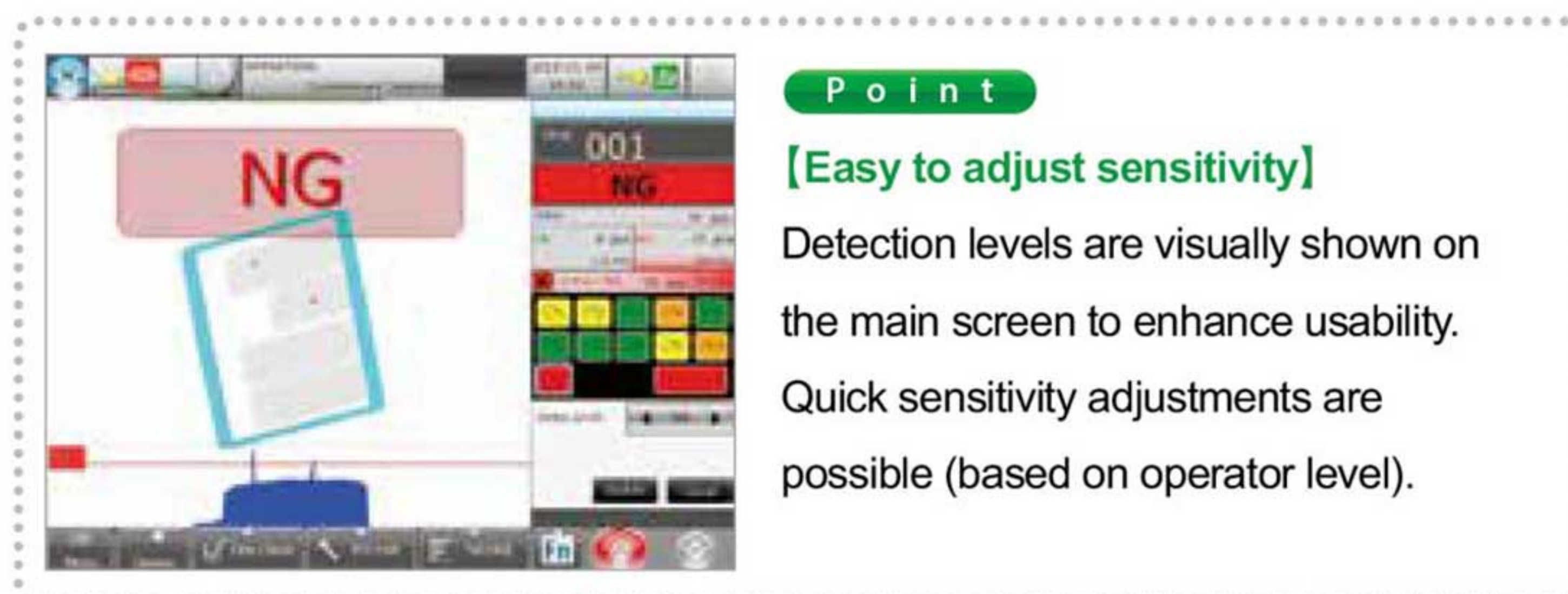
www.taglermaq.cl



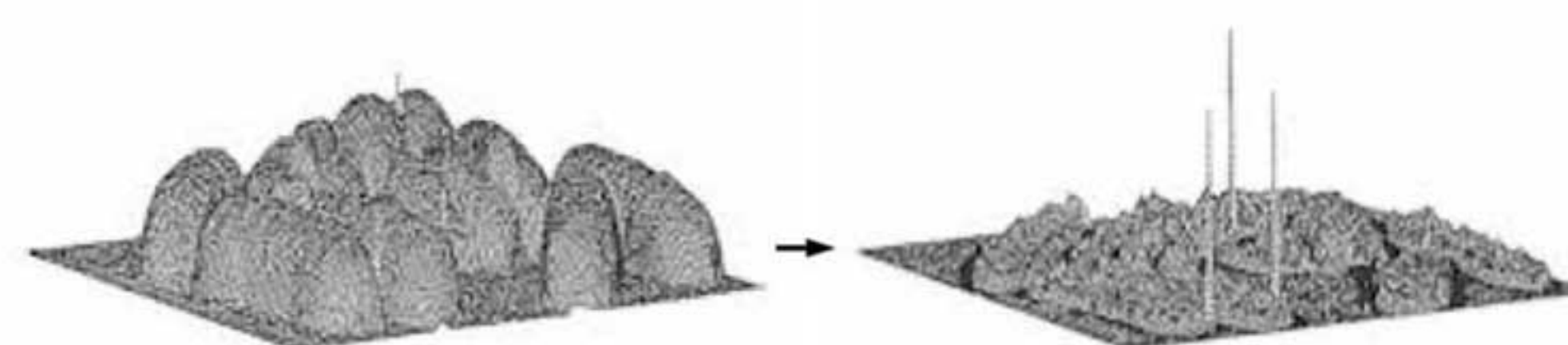
XR75 delivers industry leading detection for all products.

✓ HD imaging provides the best-in-industry detection.

XR75 provides accurate and repeatable detection of metals, wire, glass, stone, calcified bones and other dense contaminants. ALL technology was developed to provide high detection sensitivity and flexibility within all products and packaging types.



X-ray image of test pieces in 500g tenderloin. Accurate detection of small Nylon ① and SUS ② spheres is now possible.



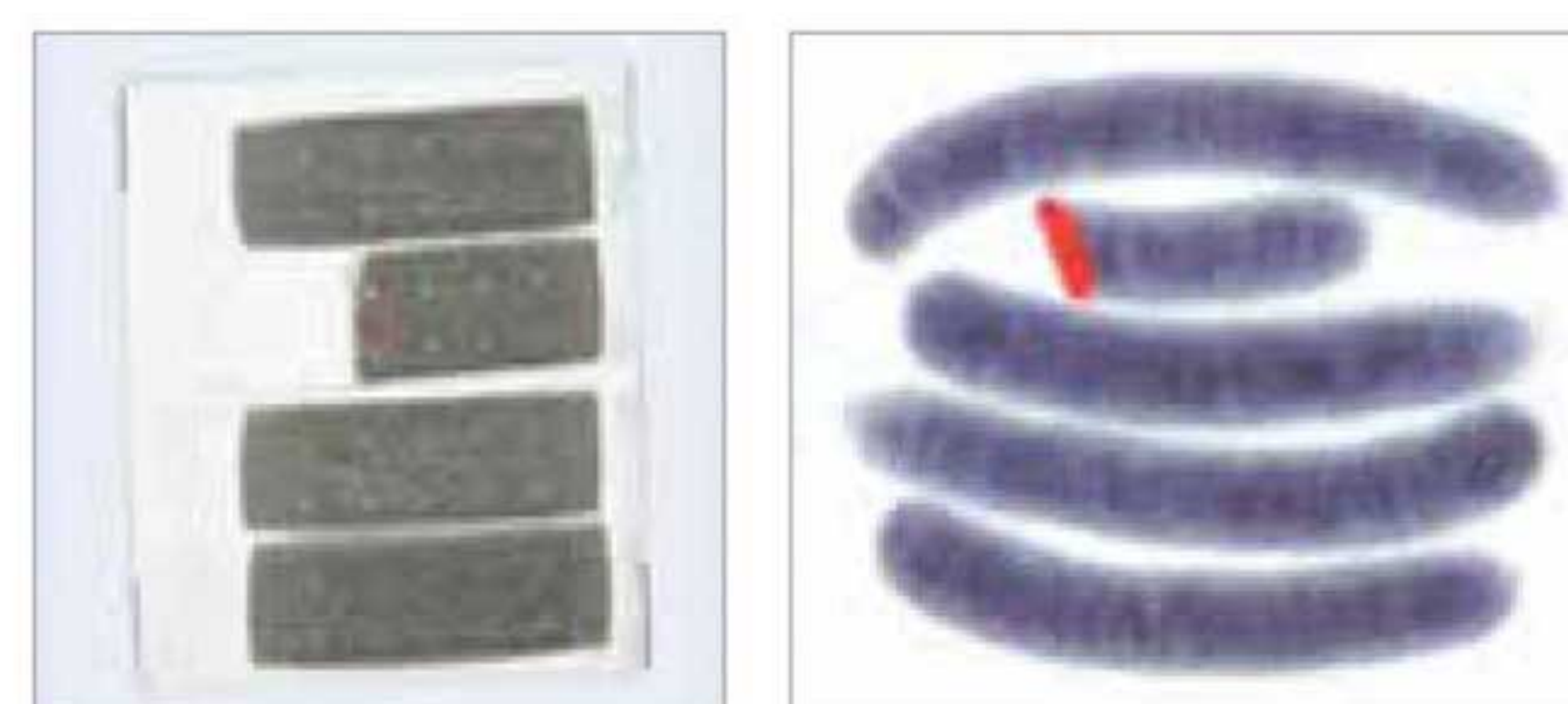
Signal processing advancements allow detection of smaller contaminants.

✓ Go Beyond Contaminant Detection

XR75 provides not only contaminant detection but also product verification simultaneously. Products can be inspected for missing product, virtual weight, count, package check, void check, etc.

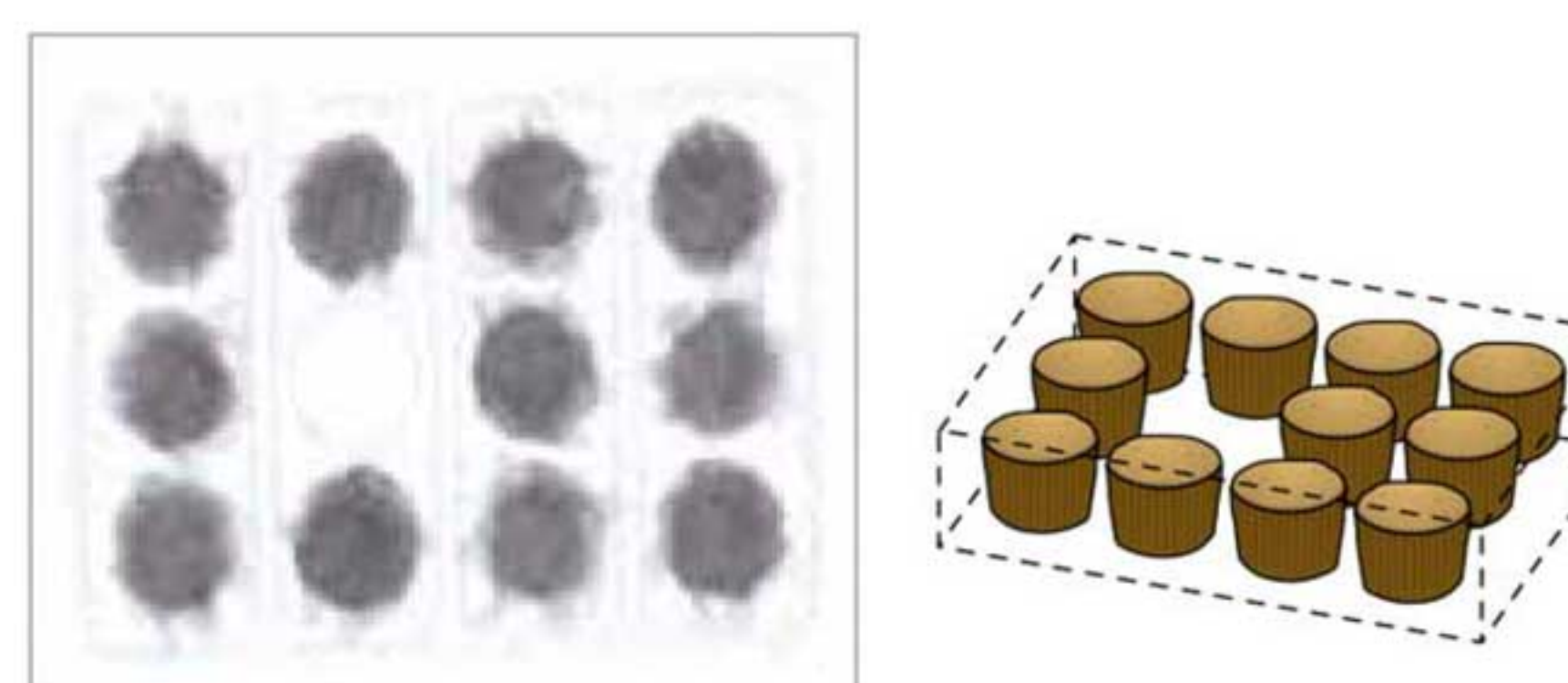
[Shape Detection] The shape, area and mass are analyzed from x-ray images to find irregularities including breaks and chips. Missing fillings can also be spotted.

[Missing Product Detection] Inspection for missing products are available for those products in which the content is indicated by the number, and the mass of each piece in a package varies per piece.



Chipped biscuit

Cut sausage



[Example of a package containing 12 cupcakes with 20 ± 2 g each]
The weight of 11 pieces with 22 g each totals 242 g, which satisfies weight requirement but the count is short.



DESCUBRE MÁS EN

www.taglermaq.cl

Major specifications

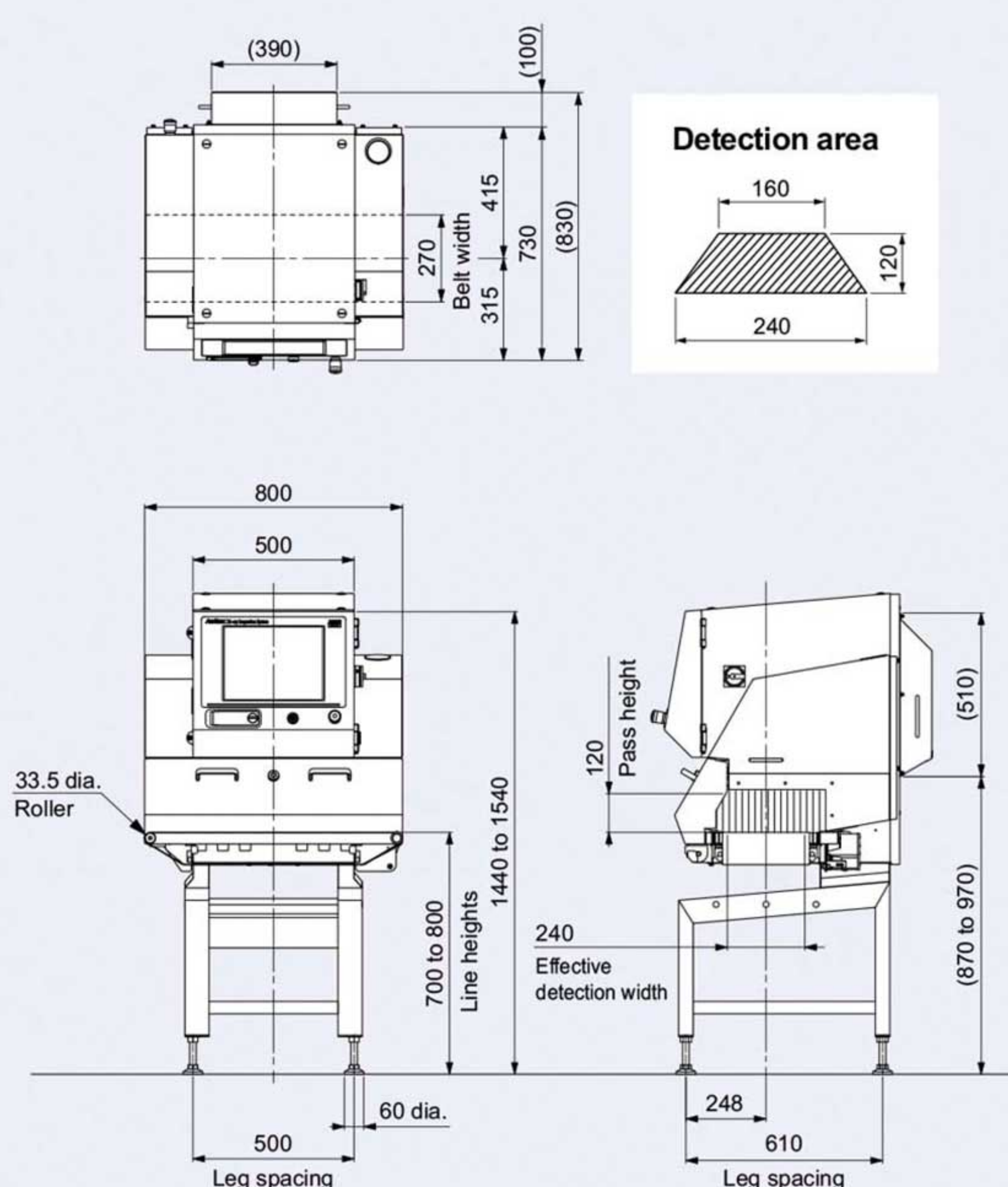
XR75

For Packaged Products

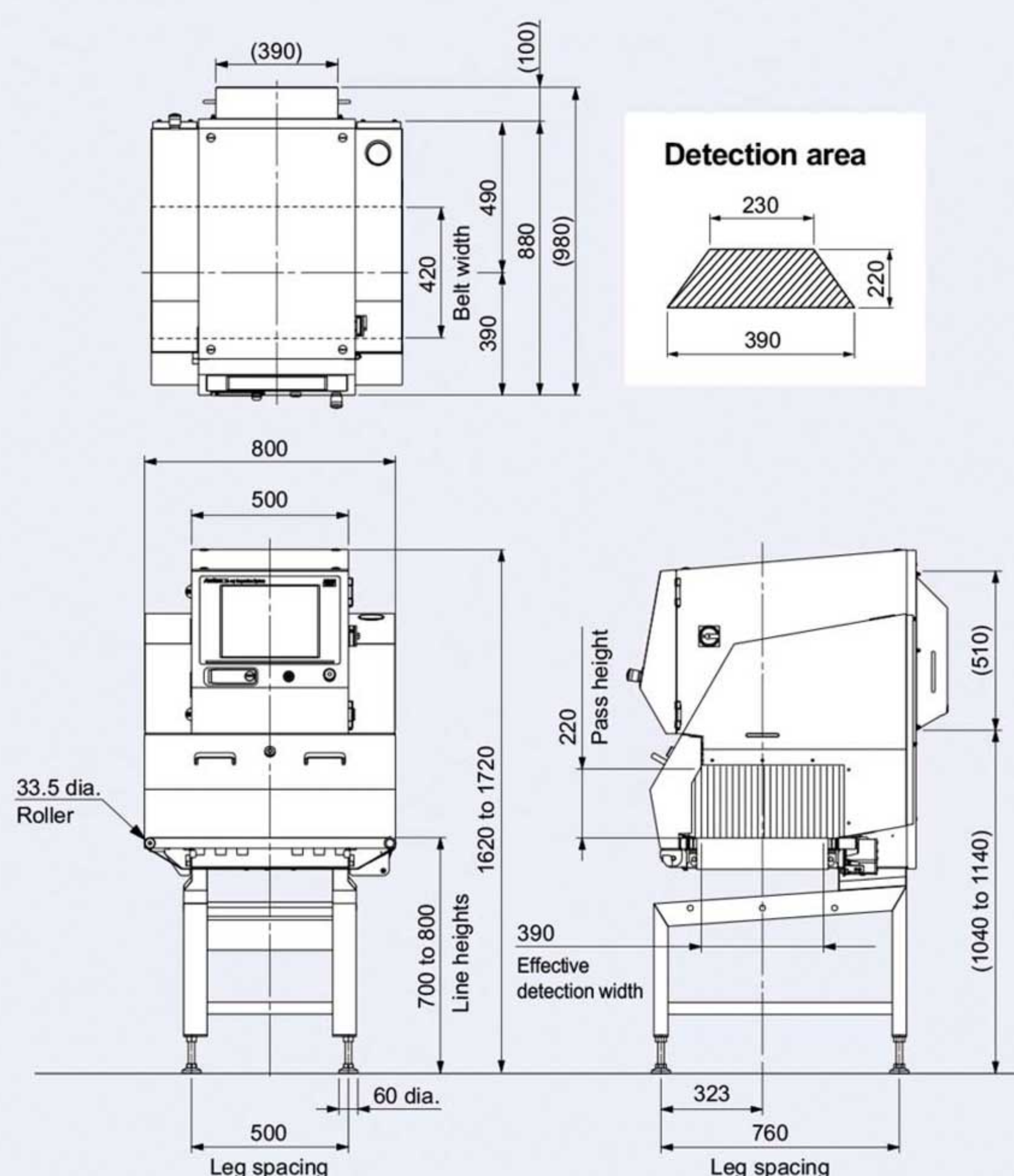
External Dimensions



KXS7522AWCLE
KXS7522AVCLE



KXS7534AWCLE
KXS7534AVCLE



Dimensions in brackets are waterproof on the entire surface. Units: mm

Specifications



Model	KXS7522AWCLE	KXS7522AVCLE	KXS7534AWCLE	KXS7534AVCLE
X-ray output	Tube voltage 30 to 80 kV, tube current 0.4 to 3.3 mA, output 12 to 100 W			
Safety	X-ray leakage maximum 1.0 μSv/h or less, prevention of x-ray leakage by safety devices			
Display	15-inch color TFT LCD			
Operation method	Touch panel (with touch buzzer)			
Detection area ^{1, 2}	Maximum width 240 mm, maximum height 120 mm		Maximum width 390 mm, maximum height 220 mm	
Belt width	270 mm		420 mm	
Preset memory	200			
Belt speed ³ / Maximum product weight ⁴	10 to 60 m/min, maximum 5 kg		10 to 60 m/min, maximum 5 kg	
	60 to 90 m/min, maximum 2 kg		—	
	10 to 40 m/min, maximum 10 kg (optional)		10 to 40 m/min, maximum 10 kg (optional)	
Power requirements ⁵	100 Vac to 240 Vac, single phase, 50/60 Hz, 700 VA or less (standard)			
Mass ⁶	245 kg	250 kg	305 kg	310 kg
Environmental conditions ^{7, 8}	Temperature: 0°C to 35°C, Relative humidity: 30% to 85%, non-condensing			
Protection class	Conveyor: IP66 Other parts: IP40	Entire surface conforms to IP66	Conveyor: IP66 Other parts: IP40	Entire surface conforms to IP66
Exterior	Stainless steel (SUS304)			

¹ : The product size should fall below the detection area.

² : The entrance and exit may require covers depending on the length of a product.

³ : Variable depending on Product No.

⁴ : Sum total of product weight on the conveyor.

⁵ : Allowable power fluctuation range is $\pm 10\%$.

⁶ : Mass without option

⁷ : For KXS7522AWCLE and KXS7522AVCLE, belt speed and maximum product weight are restricted at the temperature between 30°C and 35°C.

⁸ : The temperature between 0°C and 40°C when an optional air conditioner is installed. (AWCLE only)



DESCUBRE MÁS EN

www.taglermaq.cl